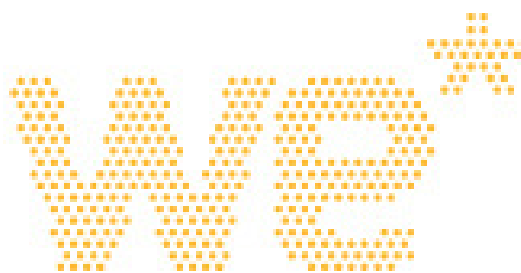


wellington  
electricity™



Electricity Information Disclosure  
New line charges for other consumers

For the year beginning 1 April 2011

Pursuant to:

Electricity Distribution (Information Disclosure) Requirements 2004 (Consolidating all amendments to 31 October 2008)

## **LINE CHARGE (NON-STANDARD) DISCLOSURE**

Wellington Electricity Lines Limited (WELL) is required by the Electricity Distribution (Information Disclosure) Requirements 2008 (the Disclosure Requirements) to disclose its line charges under Part 4 the transitional provisions.

The information in this document was prepared by WELL after making all reasonable enquiries and to the best of its knowledge; the information complies with all relevant requirements of the Disclosure Requirements.

The information in this document is not intended by WELL to constitute an offer of services to the public.

The information is available on request at:

Finance and Commercial Manager  
Wellington Electricity Lines Limited  
75 The Esplanade  
Petone

And on the Internet at:-

<http://www.welectricity.co.nz/>

In this document, words and expressions have the meaning given to them in the Electricity Information Disclosure Requirements 2004 or the Act, unless otherwise specified.

## Wellington region non standard line charges

### Wellington region, load groups G60, 60G11, 60G12, 60G15 and GNS01 consumers

Consumer ID	Previous line charges			New line charges		
	Network Line Charge \$/month	Excess demand charge \$/kVa/month	Transmission Line Charge \$/month	Network Line Charge \$/month	Excess demand charge \$/kVa/month	Transmission Line Charge \$/month
GDB802	15,485.42	1,238.59	8,725.29	16,109.49	1,288.50	9,274.99
GDB803	3,314.46			3,448.03		
GDB804	18,120.05	82.54	7,804.66	18,850.29	85.87	8,296.36
GDB805	9,498.88	13.00	7,132.59	9,881.69	13.52	7,581.94
GDB806	3,723.08	13.00	194.09	3,873.12	13.52	206.32
GDB807	66,092.33	539.94	12,846.27	68,755.85	561.70	13,655.58

#### Notes:

\* All charges are listed exclusive of GST.

\* Transmission charges are based on actual information where this is available or individual estimates of consumer volume for the year ending 1 April 2011 and 31 March 2012.