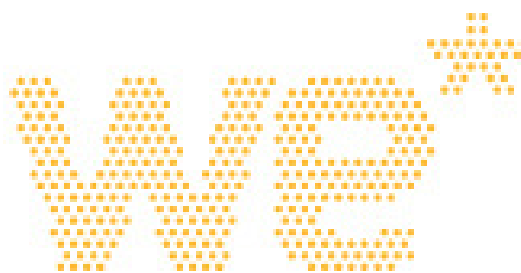


wellington  
electricity™



Electricity Information Disclosure  
New line charges for other consumers

For the year beginning 1 April 2012

Pursuant to:

Electricity Distribution (Information Disclosure) Requirements 2004 (Consolidating all amendments to  
31 October 2008)

## **LINE CHARGE (NON-STANDARD) DISCLOSURE**

Wellington Electricity Lines Limited (WELL) is required by the Electricity Distribution (Information Disclosure) Requirements 2008 (the Disclosure Requirements) to disclose its line charges under Part 4 the transitional provisions.

The information in this document was prepared by WELL after making all reasonable enquiries and to the best of its knowledge; the information complies with all relevant requirements of the Disclosure Requirements.

The information in this document is not intended by WELL to constitute an offer of services to the public.

The information is available on request at:

Chief Financial Officer  
Wellington Electricity Lines Limited  
75 The Esplanade  
Petone

And on the Internet at:-

<http://www.welectricity.co.nz/>

In this document, words and expressions have the meaning given to them in the Electricity Information Disclosure Requirements 2004 or the Act, unless otherwise specified.

## Wellington region non standard line charges

Customer 1	Unit	Notes	Previous charges	New charges
Supply charge	NZD/pcm	<= nominated demand (1500kVA)	\$ 16,109.49	\$ 16,518.69
Excess demand charge	NZD/kVa/pcm	> 1500kVA	\$ 13.52	\$ 13.86
Customer 2	Unit	Notes	Previous charges	New charges
Supply charge	NZD/pcm	<= nominated demand (2000kVA)	\$ 18,850.29	\$ 19,329.11
Excess demand charge	NZD/kVa/pcm	> 2000kVA	\$ 85.87	\$ 88.05
Customer 3	Unit	Notes	Previous charges	New charges
Supply charge	NZD/pcm	<= nominated demand (1270kVA)	\$ 9,881.69	\$ 10,132.70
		<= 1370 kVa	\$ 10,571.01	\$ 10,839.52
		<= 1470 kVa	\$ 11,260.33	\$ 11,546.35
		<= supply capacity (2000kVA)	\$ 11,949.65	\$ 12,253.18
Excess demand charge	NZD/kVa/pcm	> 2000kVA	\$ 13.52	\$ 13.86
Customer 4	Unit	Notes	Previous charges	New charges
Excess demand charge	NZD/kVa/pcm	> 50kVA	\$ 13.52	\$ 13.86
Monthly Network charge	NZD/pcm	<= Network capacity of 50kVA	\$ 3,873.12	\$ 3,971.50
Customer 5	Unit	Notes	Previous charges	New charges
Monthly Network Service Charge	NZD/pcm		\$ 410.00	\$ 420.41
Customer 6	Unit	Notes	Previous charges	New charges
Dedicated asset charge (Annual)	Fixed		\$ 41,376.36	\$ 42,427.36
Customer 7	Unit	Notes	Previous charges	New charges
<b>Site 1</b>				
Annual Network Charge	Fixed		\$ 99,427.71	\$ 101,953.28
Excess Demand Charge	NZD/kVa/pcm	> 1,000kVA	\$ 99.43	\$ 101.96
<b>Site 2</b>				
Annual Network Charge	Fixed		\$ 97,945.29	\$ 100,433.21
Excess Demand Charge	NZD/kVa/pcm	> 1,000kVA	\$ 97.95	\$ 100.44
<b>Site 3</b>				
Annual Network Charge	Fixed		\$ 98,406.14	\$ 100,905.76
Excess Demand Charge	NZD/kVa/pcm	> 1,000kVA	\$ 98.41	\$ 100.91
<b>Site 4</b>				
Annual Network Charge	Fixed		\$ 302,068.79	\$ 309,741.66
Excess Demand Charge	NZD/kVa/pcm	> 2,000kVA	\$ 151.03	\$ 154.87
<b>Site 5</b>				
Annual Network Charge	Fixed		\$ 115,417.12	\$ 118,348.84
Excess Demand Charge	NZD/kVa/pcm	> 1,000kVA	\$ 115.42	\$ 118.35
<b>Site 6</b>				
Annual Network Charge	Fixed		\$ 111,805.20	\$ 114,645.17
Excess Demand Charge	NZD/kVa/pcm	> 1,000kVA	\$ 111.81	\$ 114.65
Customer 8	Unit	Notes	Previous charges	New charges
Excess demand charge	NZD/kVa/pcm	> 100kVA	\$ 13.52	\$ 13.86
Monthly Network charge	NZD/pcm	<= Network capacity of 50kVA	\$ 1,323.00	\$ 1,356.61
Customer 9	Unit	Notes	Previous charges	New charges
Monthly Network Service Charge	NZD/pcm		\$ 483.84	\$ 496.13
Customer 10	Unit	Notes	Previous charges	New charges
Supply charge	NZD/pcm	<= nominated demand (700kVA)	\$ 11,971.50	\$ 12,275.59
Excess demand charge	NZD/kVa/pcm	> 700kVA	\$ 195.00	\$ 199.95

### Notes:

\* All charges are listed exclusive of GST.

\* Transmission charges are also applied in addition to the charges above. They are charged as per the Transmission pass through methodology.